



Main Characteristics
Axial Sub-miniature fuse; Time-Lag(T)
Standard

UL-248-14

Materials

- Tube: Ceramic Tube
- End Caps: Nickel plated brass
- Axial Leads: Nickel plated caps
Tin plated copper

wires Operating Temperature

-55°C to +125°C

Storage Conditions

+10°C to +60°C

Relative humidity: ≤75% yearly average
Without dew, maximum 30 days at 95%

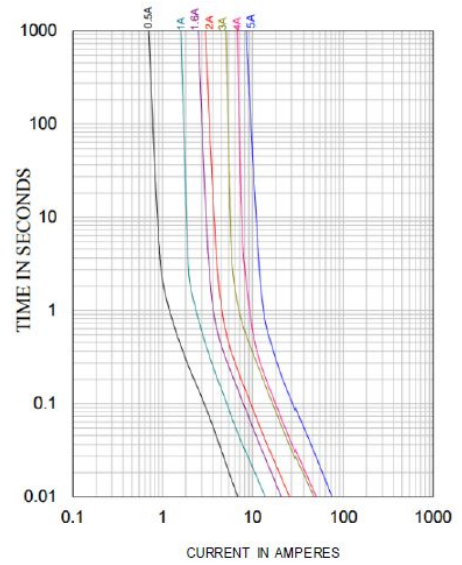
Vibration Resistance

24 cycles at 15 min. each (60068-6)
10-60Hz at 0.75mm amplitude
60-2000Hz at 10g acceleration

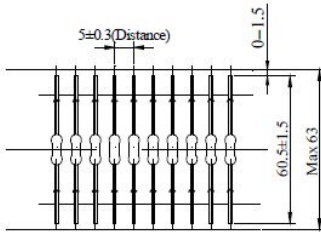
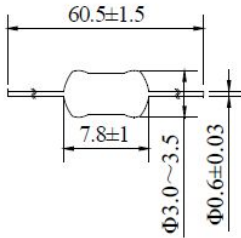
Soldering Parameters

- 260°C. ≤5 sec (Wave Soldering)
- 350°C. ≤3 sec (Hand Soldering)
- Soldering Peak:**
260°C. 10 sec. (IEC 60068-20)

Average Time Current (I-T Curve)



Dimensions (unit: mm)



Time vs Current Characteristics: UL-248-14

Rated Current	100%	200%	300%	800%
100mA~6.3A	>4h	1s~60s	0.2s~3s	10ms~100ms



Electrical Characteristics

Amp Code	Rated Current	Max. Voltage	Nominal Melting I²t (A²sec)	Breaking Capacity	Approvals					
					cULus	cURus	TUV	CQC	PSE	KC
0100	100mA	250V AC	0.0191	50A@250V AC 50A@125V AC	●	○	○	○	○	○
0125	125mA		●		○	○	○	○	○	
0160	160mA		●		○	○	○	○	○	
0200	200mA		●		○	○	○	○	○	
0250	250mA		●		○	●	○	○	○	
0315	315mA		●		○	●	○	○	○	
0400	400mA		●		○	●	○	○	○	
0500	500mA		●		○	●	●	○	○	
0630	630mA		●		○	●	○	○	○	
0800	800mA		●		○	●	○	○	○	
1100	1.00A		●		○	●	●	●	●	
1125	1.25A		●		○	●	●	●	●	
1160	1.60A		●		○	●	●	●	●	
1200	2.00A		●		○	●	●	●	●	
1250	2.50A		●		○	●	●	●	●	
1315	3.15A		○		●	●	○	○	○	
1400	4.00A	○	●	●	○	○	○			
1500	5.00A	○	●	○	○	○	○			
1630	6.30A	○	●	○	○	○	○			

Note: (1) Permissible continuous operating current is ≤100% at ambient temperature of 23°C (73.4°F)
(2) The cURus and cULus certification by 125V and 250V; the others certification only by 250V.

Ordering Information

Series	Amp Code	Supplementary Code	Qty
212			